

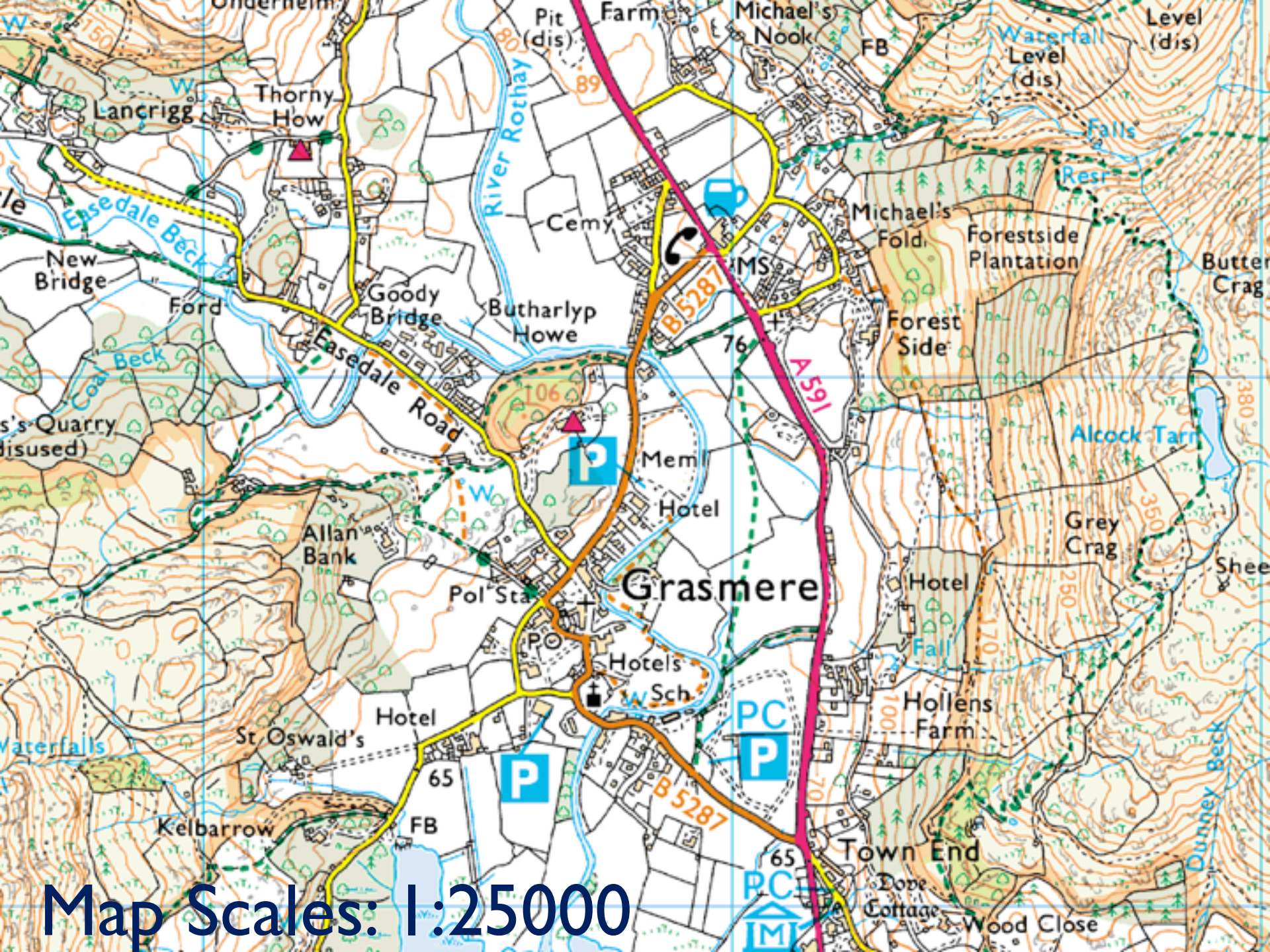
# Navigation 1:

## Grid References and Map Symbols

# Navigation 1

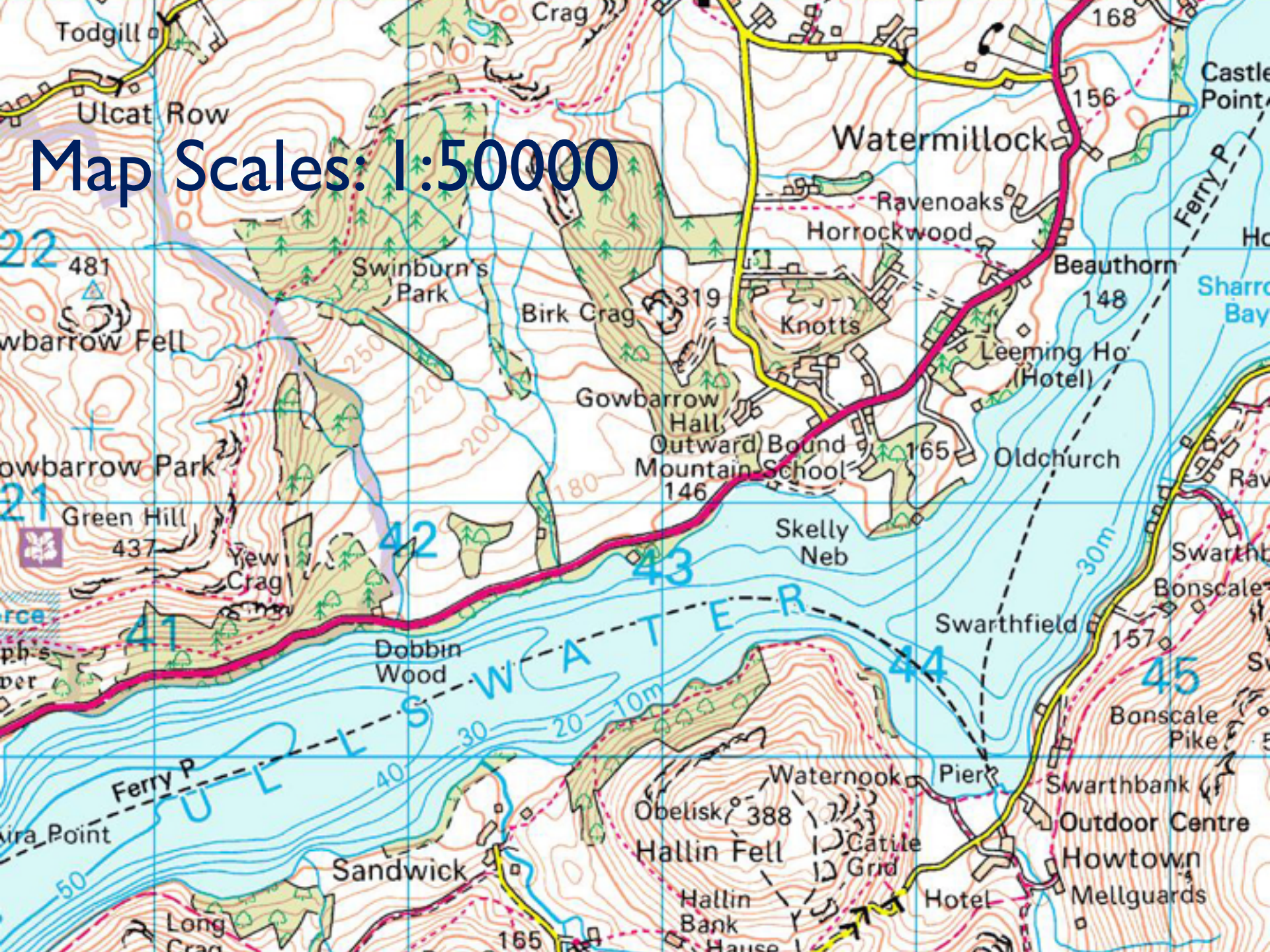
---

- Map Scales:
- 1:25000 and 1:50000
- 1:25k has more detail: paths and importantly walls/fences. This is what you will use at Bronze level.
- 1:50k shows wider area but less detail. Used more in wild country and longer journeys eg. on Gold expeditions.

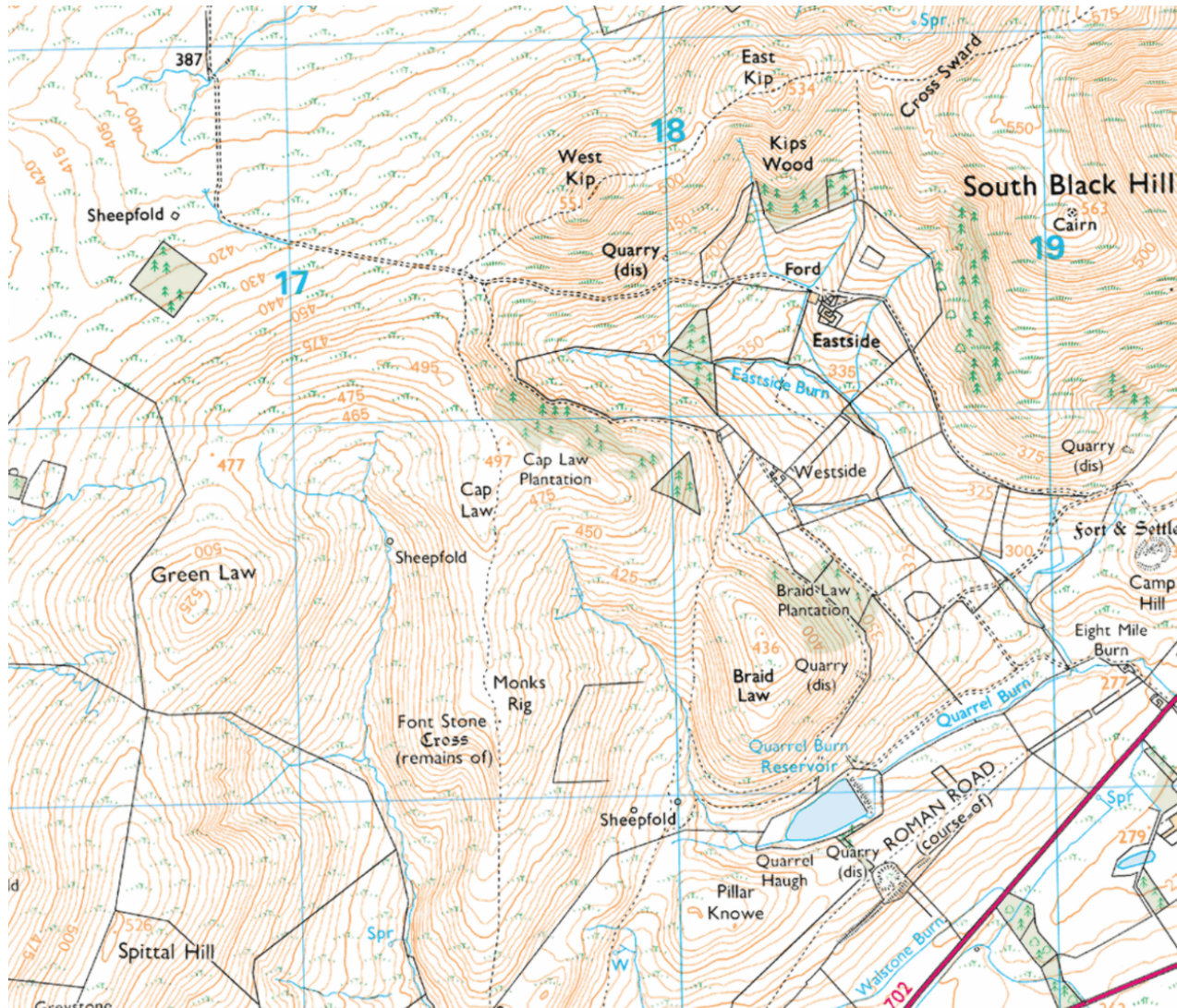


Map Scales: 1:25000

# Map Scales: 1:50000

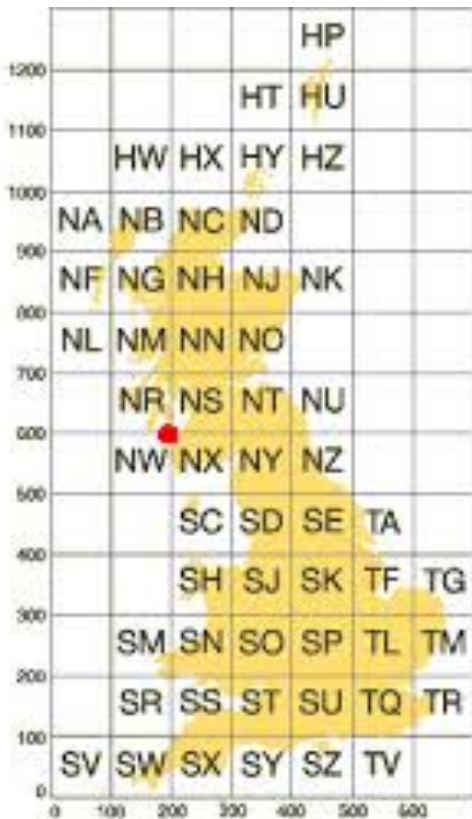


This map is typical of the areas you'll be walking. Try and identify at least 10 things.

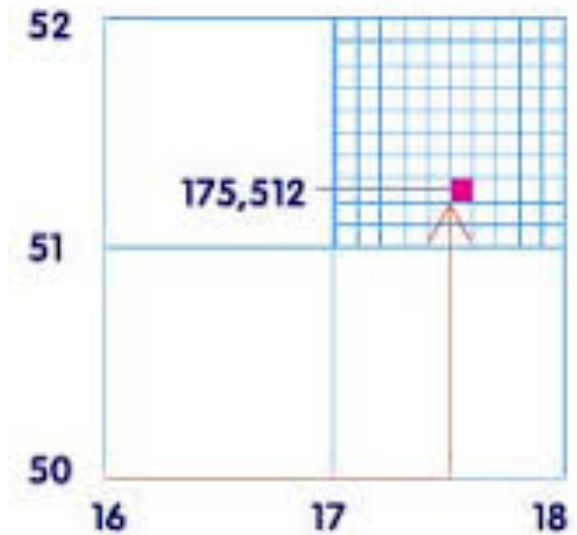


# 6 figure grid references

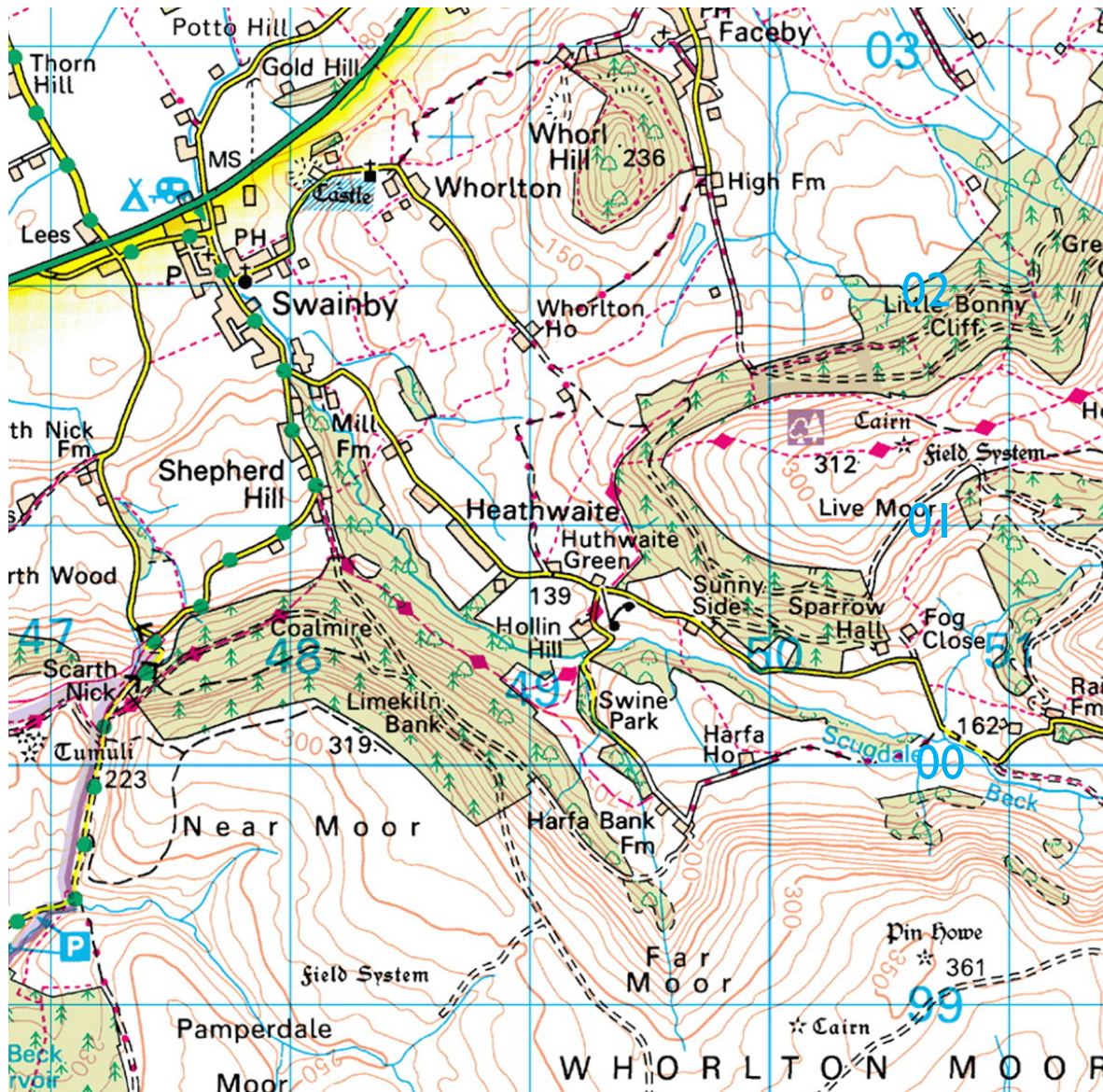
- UK divided into squares 100km x 100km
- Squares on map 1km x 1km



- Read numbers along bottom first
- Use compass to measure tenths

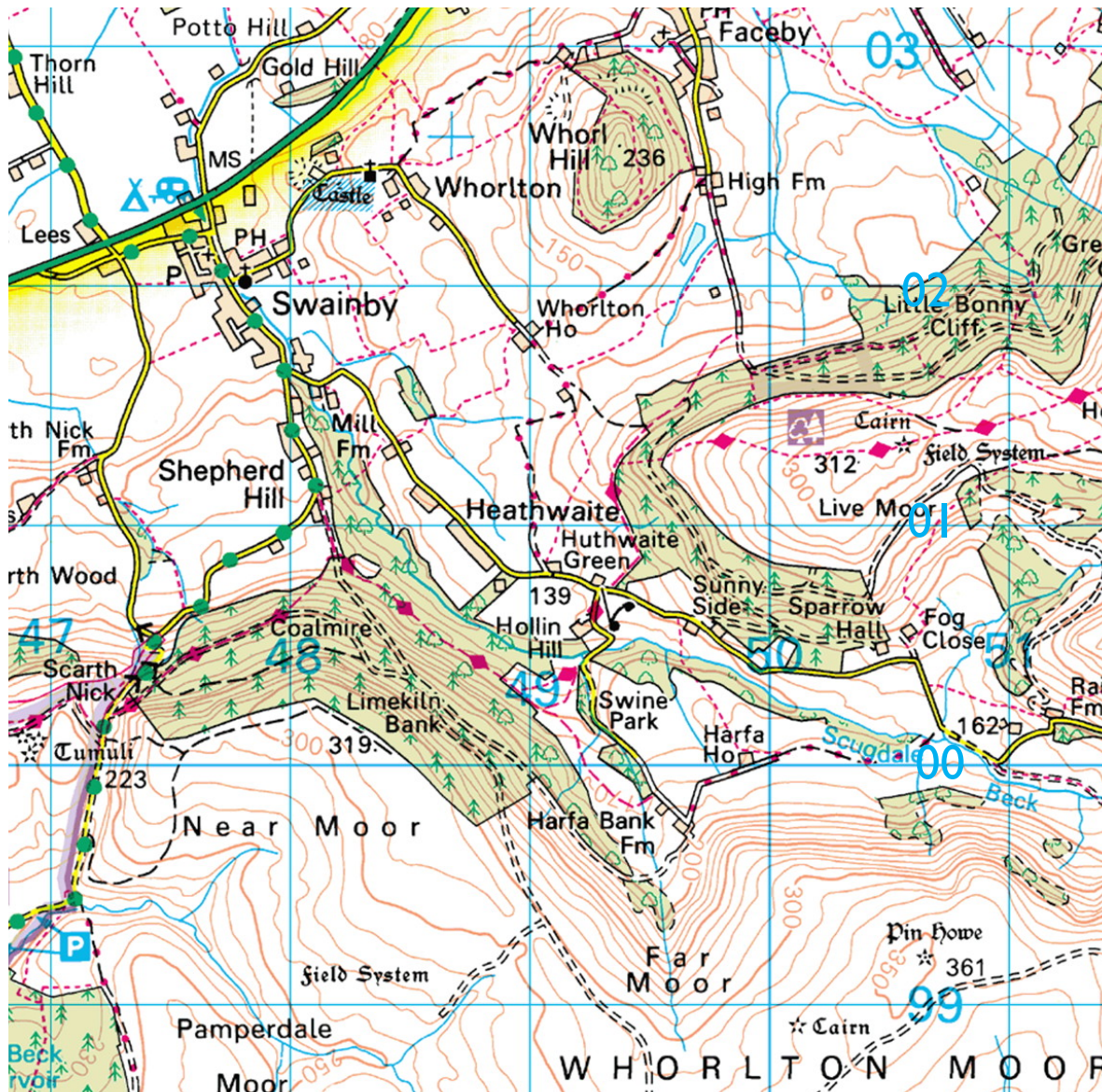


# Practice... What is the grid reference of...



- a) Church with tower
- b) Campsite
- c) Phonebox
- d) Most Northern Cairn
- e) Highest point

# Practice... What's at these grid references?



a) 481 025

b) 471 992

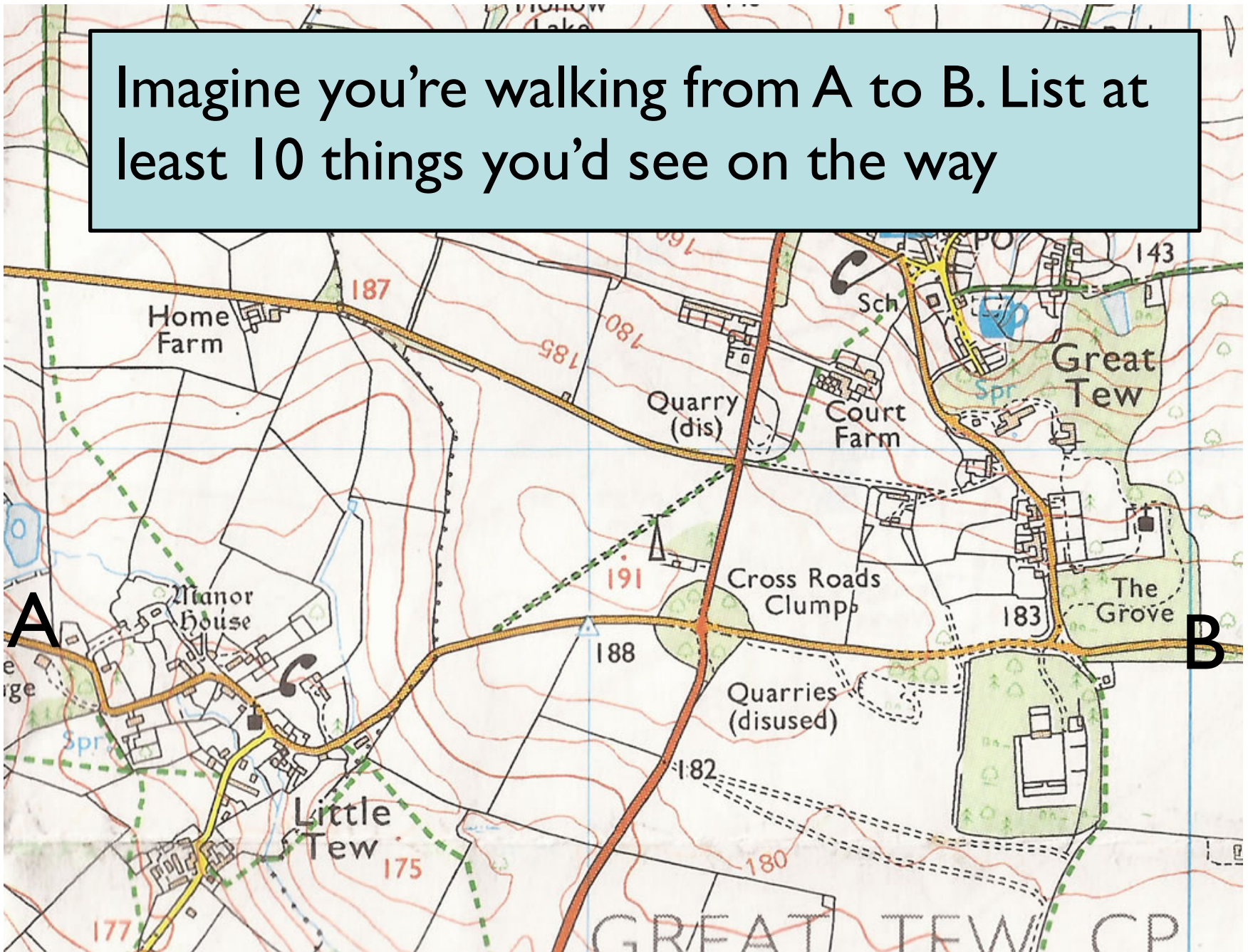
c) 490 018

d) 501 028

e) 501 989

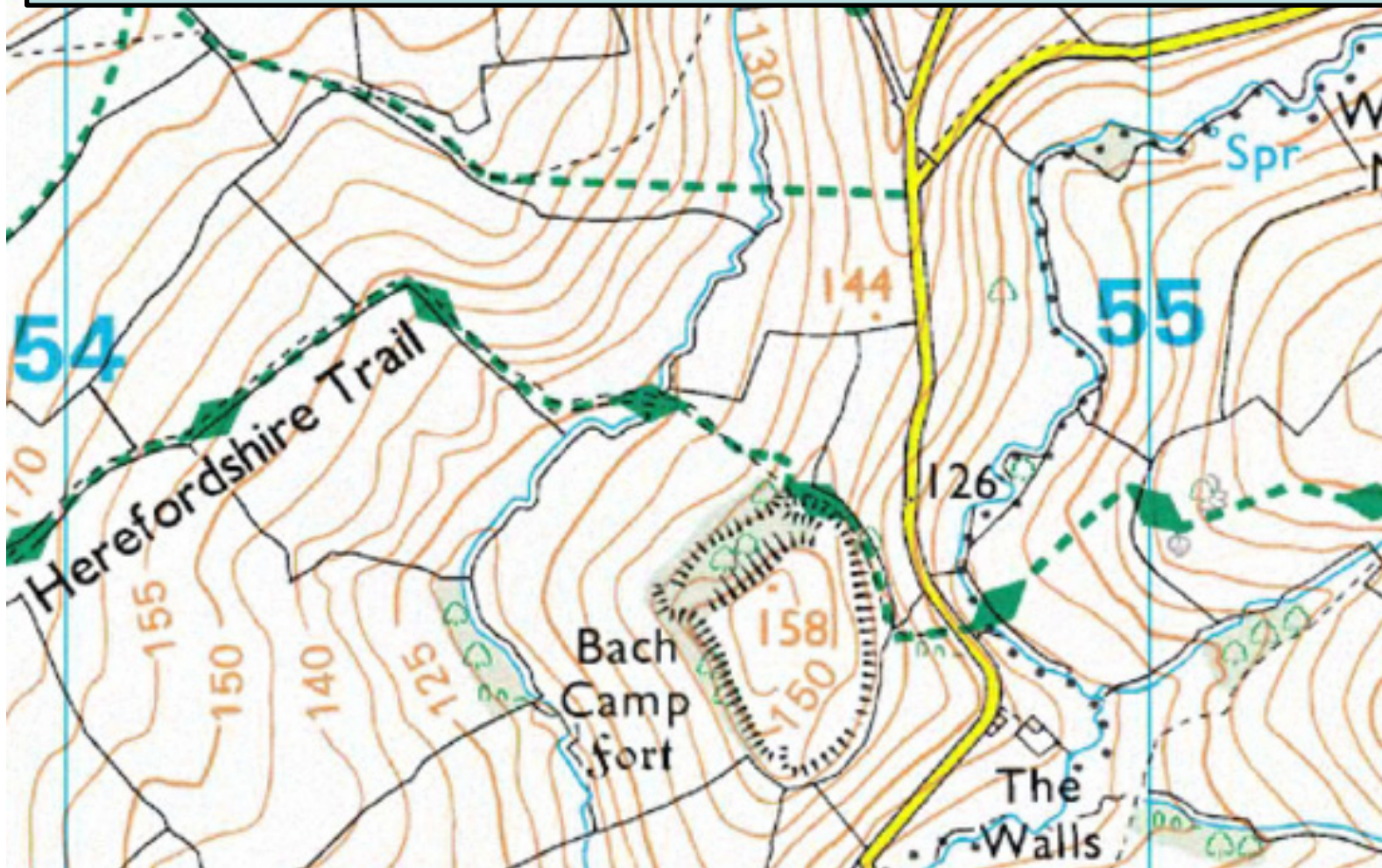


Imagine you're walking from A to B. List at least 10 things you'd see on the way



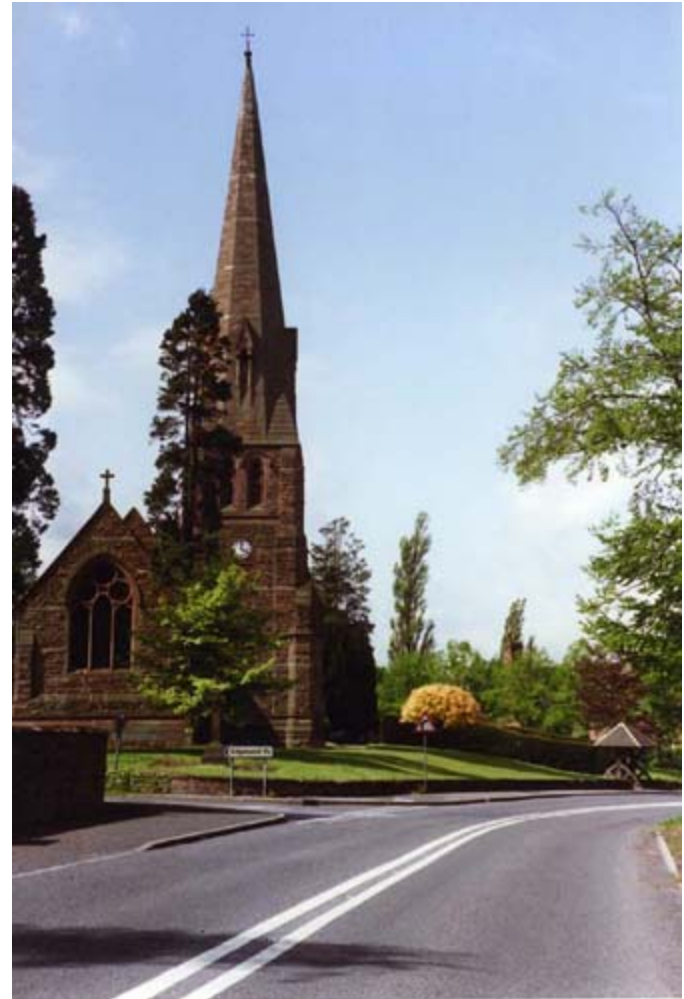
Imagine you're walking from A to B. List at least 10 things you'd see on the way

A



B

Where was the photo taken? Which direction are you facing?

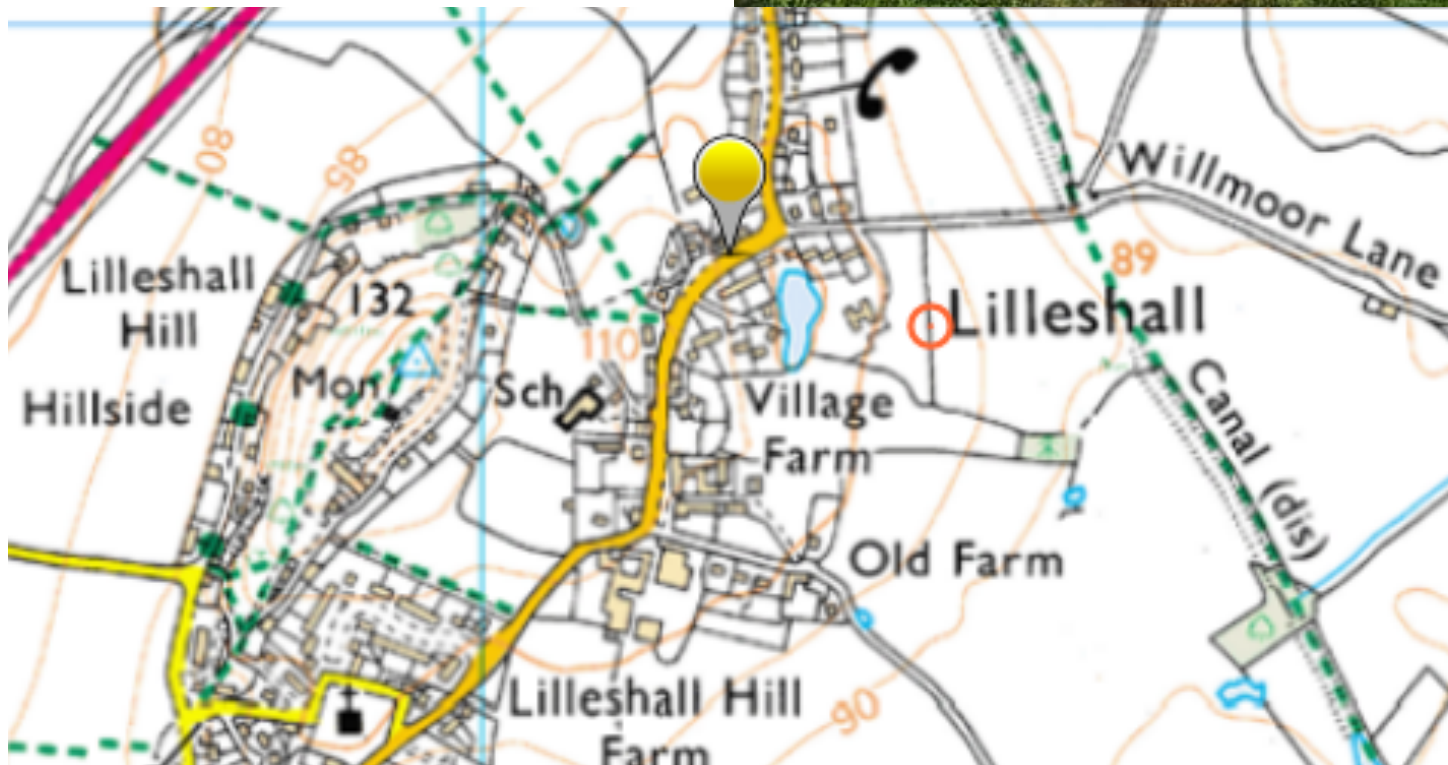


Where was the photo taken?  
Which direction are you facing?



© Crown copyright and database rights  
For full terms and conditions please visit the website

Where was the photo taken? Which direction are you facing?



Where was the photo taken? Which direction are you facing?

